



Hannay Reels®

The reel leader.

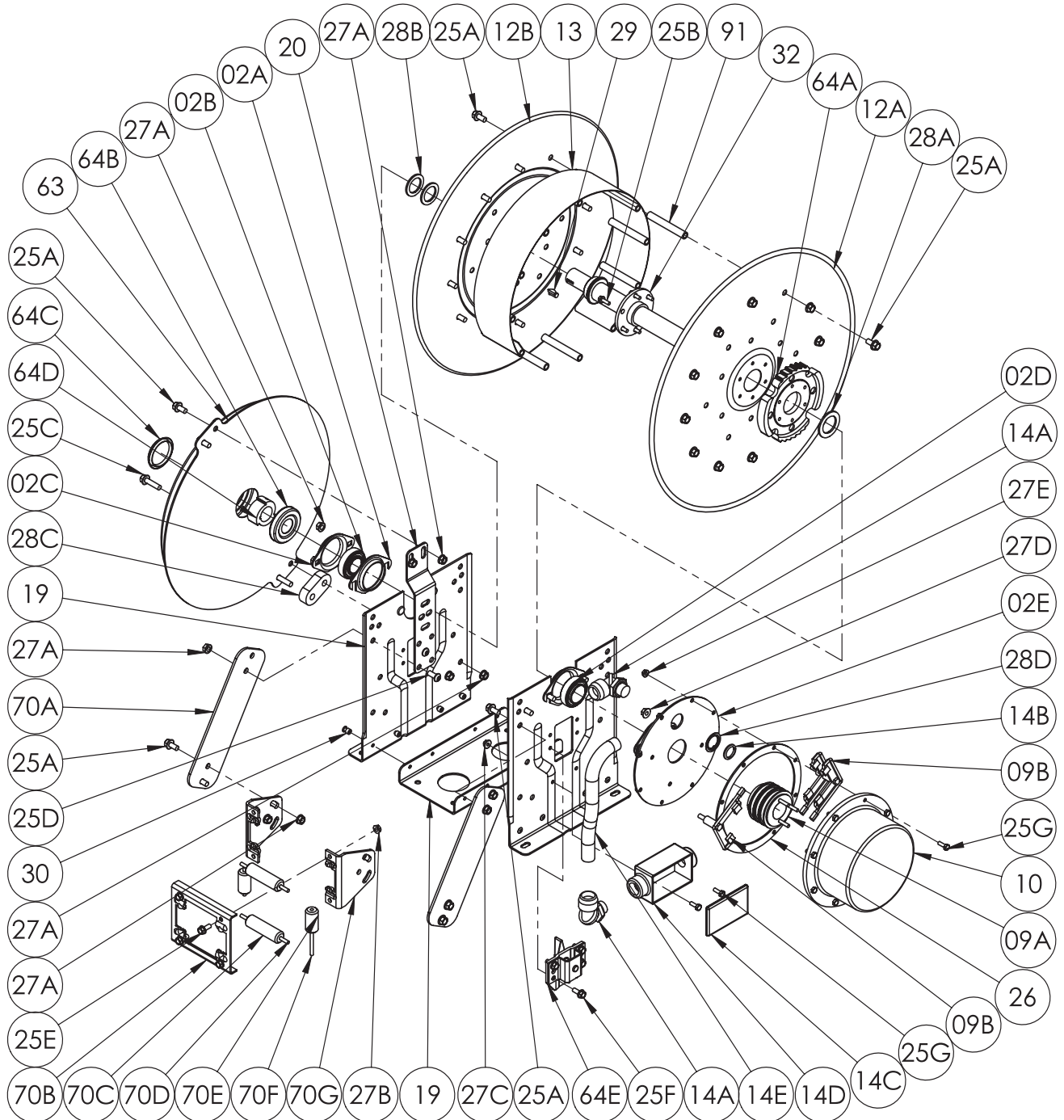
mdi is your Hannay Distributor

call: (727) 835 - 0674 | fax: (813) 571 - 0422

www.HannayReelSales.com | sales@HannayReelSales.com

ISO 164

PARTS LIST
NSCR SERIES



**PARTS LIST
ISO 164
NSCR SERIES**

When ordering parts
BE SURE TO SPECIFY COMPLETE MODEL NUMBER and SERIAL NUMBER OF REEL.
USE PART NUMBER!

Item No.	Description	PART NUMBER	Quantity
02A	Self Aligning Bearing Holder, E-Coated (Slotted)	9902.2801	2
02B	1" Self Aligning Bearing Insert Plated	9902.1500	1
02C	Self Aligning Bearing Holder, E-Coated	9902.2800	1
02D	1-1/2" Self Aligning Bearing Insert Plated	9902.4001	1
02E	Collector Ass'y Backing Plate w/ Bearing Holder	9943.0005	1
02F	1" Self Aligning Bearing for N Series Complete (Includes 02A, 02B and 02C)	9902.2600	1
09A	3 Conductor 45 Amp 1-1/2" Bore Ass'y (Includes 09B)	9942.0314	1
09A	4 Conductor 45 Amp 1-1/2" Bore Ass'y (Includes 09C) (Not Shown)	9942.0414	1
09B	3 Conductor 45 Amp Brush Harness Ass'y	9943.0019	1
09B	4 Conductor 45 Amp Brush Harness Ass'y (Not Shown)	9943.0020	1
10	Collector Cover for 3 Conductor 45 Amp Ass'y (Include 26)	9943.0001	1
10	Collector Cover for 4 Conductor 45 Amp Ass'y (Includes 26) (Not Shown)	9943.0002	1
12A	Front Disc (Includes 64A and 25B)	Spec Model	1
12B	Back Disc (Includes Disc Washer for 23-24 and larger Discs)	Spec Model	1
13	15-1/2" Diameter Wrap Around Drum (304 Stainless Steel)	9905.0178	1
13	10-1/2" Diameter Wrap Around Drum (304 Stainless Steel) (Not Shown)	9905.0138	1
14A	3/4" Swivel-loc Liquidtight Connector	9955.0009	2
14B	3/4" Locking Nut for Liquidtight Connector	9955.0014	1
14C	Red Dot Junction Box Cover w/ Screws	9955.0044	1
14D	Red Dot Junction Box for 3 Conductor 45 Amp (Includes 14C)	9955.0045	1
14D	Red Dot Junction Box for 4 Conductor 45 Amp (Includes 14C) (Not Shown)	9955.0047	1
14E	3/4" Liquidtight Flex Conduit ~(Per Foot) Specify Model	9955.0114	1
19	N Series Spring Reel Frame Assembly	Spec Model	1
20	Universal Spring Mounting Bracket for N Series	9922.0050	1
25A	3/8"-16 x 3/4" Spinlock Bolt (Specify Model)	9904.2201	20 or 32
25B	1/4"-20 x 3/4" Spinlock Bolt	9904.1060	6
25C	3/8"-16 x 1-1/2" Spinlock Bolt	9904.2204	2
25D	3/8"-16 x 7/8" Socket Head Cap Screw	9904.9201	2
25E	5/16"-18 x 3/4" Spinlock Bolt (For Roller Ass'y)	9904.2101	4
25F	5/16"-18 x 3/4" Thread Cutting Hex Head Bolt	9958.0055	4
25G	1/4"-20 x 3/4" Hex Head Cap Screw	9904.1001	10
26	Collector Cover Gasket	9943.0004	1
27A	3/8"-16 Spinlock Nut (Specify Model)	9904.6200	12 or 16
27B	5/16"-18 Small Flange Spinlock Nut	9904.5100	4
27C	1/4"-20 Large Flange Spinlock Nut	9904.6002	2
27D	5/16"-18 Large Flange Spinlock Nut	9904.6100	2
27E	1/4"-20 Small Flange Spinlock Nut	9904.6000	8
28A	1-1/2" I.D. Cable Reel Hub Spacer	9954.0025	1
28B	1-7/8" O.D. x 1-5/16" I.D. x 1/8" Thick Hub Spacer (Plastic)	9954.0021	2
28C	Oval Spring Spacer for "A", "B" and "G" Springs	9922.0032	1
28C	Spring Spacer for "C" and "J" Springs	9922.0033	1
28D	Reducing Washer for Liquidtight Connector	9955.0013	1
29	Woodruff Key #9 (3/16" x 3/4")	9916.0080	1
30	1/4" x 3/8" Blind Pop Rivet	9922.0058	8
32	Hub for NSCR700, per P32A-00080	9955.0066	1
63	"B" Spring (w/ Arbor)	9921.0015	1
63	"A" Spring (w/ Arbor) (Not Shown)	9921.0010	1
63	"G" Spring (w/ Arbor)	9921.0021	1
63	"J" Spring (w/ Arbor) (Not Shown)	9921.0030	1
63	"C" Spring (w/ Arbor) (Not Shown)	9921.0018	1
64A	Ratchet Wheel (Includes 25A)	9922.0015	1
64B	Cap-Plug for Inner Spring Side	9922.0036	1
64C	Cap-Plug for Outer Spring Side	9922.0037	1
64D	Spring Arbor for "B", "G", "J" or "C" Springs	9922.0002	1
64D	Spring Arbor for "B", "G", "J" or "C" Springs (Not Shown)	9922.0001	1
64E	Ratchet Locking Assembly for N Series	9922.0029	1
69	N204 Complete Roller Assembly for models NSCR716	9939.0111	1
69	N203 Complete Roller Assembly for models NSCR715 (Not Shown)	9939.0110	1
70A	N Series Single Roller Arm (Specify Model)	9941.0030	2
70B	Roller Bracket Frame for N204 Roller Ass'y	9940.0151	1
70B	Roller Bracket Frame for N203 Roller Ass'y (Not Shown)	9940.0150	1
70C	Nylon Roller for N204 Rollers (1" Dia. x 3-1/2" Long)	9940.0182	2
70C	Nylon Roller for N203 Rollers (1" Dia. x 2-1/2" Long) (Not Shown)	9940.0181	2
70D	Stainless Steel Roller Rod for N204 Rollers (1/4" Dia. X 5-1/2" Long)	9940.0192	2
70D	Stainless Steel Roller Rod for N203 Rollers(1/4" Dia. X 4-1/2" Long)	9940.0191	2
70E	Nylon Roller for Vertical Roller (1" Dia. x 2" Long)	9940.0180	2
70F	Stainless Steel Roller Rod for Vertical Roller (1/4" Dia. X 2-11/16" Long)	9940.0190	2
70G	N Series Roller Mounting Bracket, per P70A-00500	9940.0171	2
91	4" Long Anodized Threaded Spacer Pipe (Specify Model)	9904.0308	6 or 12
91	3" Long Anodized Threaded Spacer Pipe (Specify Model) (Not Shown)	9904.0306	6 or 12