



Hannay Reels®

The reel leader.

mdi is your Hannay Distributor

call: (727) 835 - 0674 | fax: (813) 571 - 0422

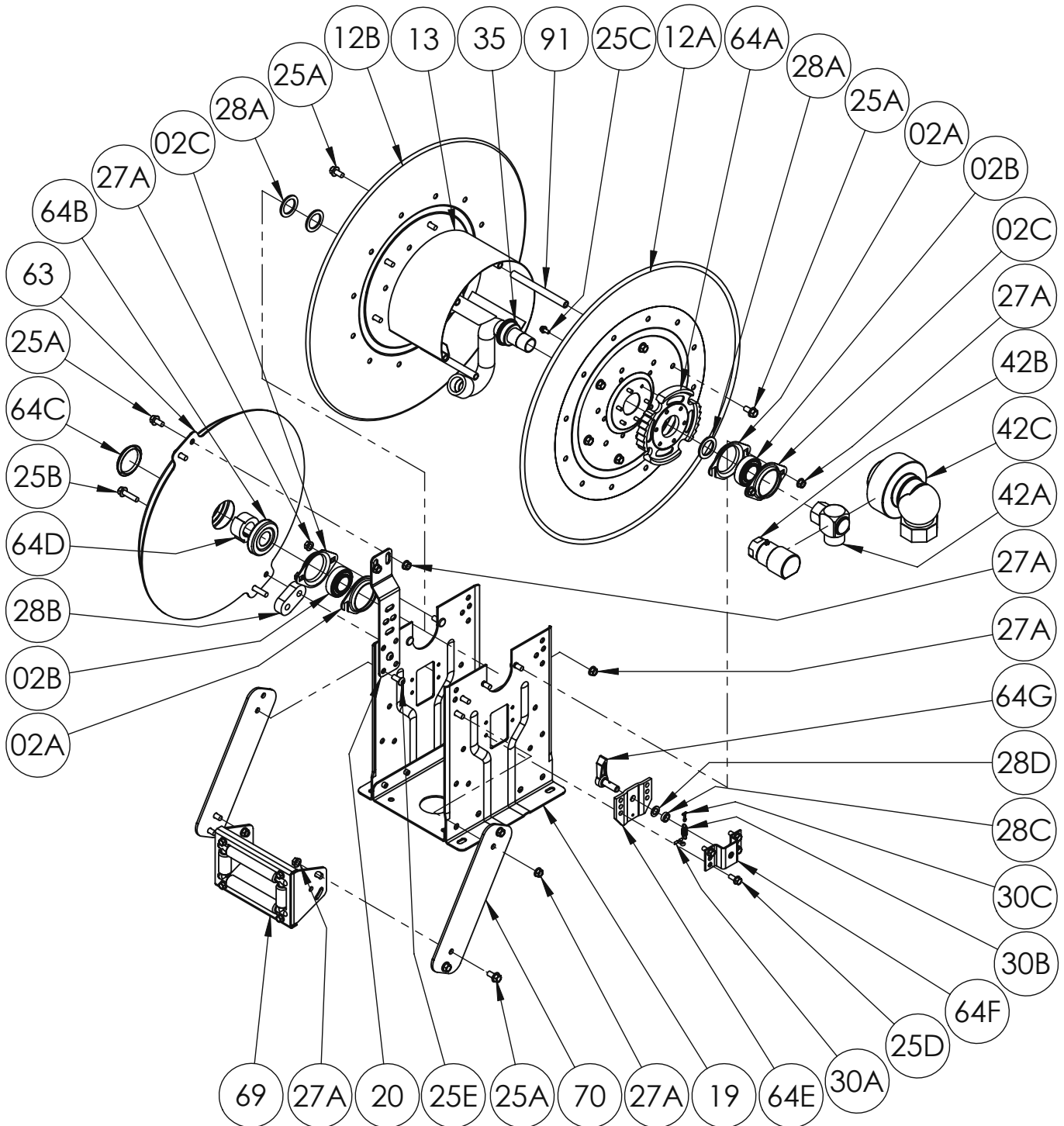
www.HannayReelSales.com | sales@HannayReelSales.com

ISO 81

PARTS LIST

N-800 SERIES

Spring Retractable Reels For Single Hose



PARTS LIST
ISO 81
N-800 Series

When ordering parts

BE SURE TO SPECIFY COMPLETE MODEL NUMBER and SERIAL NUMBER OF REEL.

USE PART NUMBER!

Item No.	Description	PART NUMBER	Quantity
02A	Self Aligning Bearing Holder (Slotted), per P02A-00090 (Steel E-Coated)	9902.2801	2
02B	1" Self Aligning Bearing Insert (Plated)	9902.1500	2
02C	Self Aligning Bearing Holder, per P02A-00080 (Steel E-Coated)	9902.2800	2
02D	1" Self Aligning Bearing for N Series Complete (Items 02A, 02B and 02C)	9902.2600	2
12A	Front Disc	Spec Model	1
12B	Back Disc (Includes Disc Washer for 23-24 and larger Discs)	Spec Model	1
13	10-1/2" Diameter 304 SST Wrap Around Drum (Specify Model)	9905.0138	1
19	N Series Spring Reel Frame Assembly Complete	Spec Model	1
20	Universal Spring Mounting Bracket for N Series, per P20A-00280 (for "B" & "J" Springs)	9922.0050	1
25A	3/8"-16 x 3/4" Spinlock Bolt	9904.2201	16 or 18
25B	3/8"-16 x 1-1/2" Spinlock Bolt (For "B" Spring)	9904.2204	2
25C	1/4"-20 x 1/2" Spinlock Bolt (For Ratchet Wheel)	9904.1058	6
25D	5/16"-18 x 3/4" Thread Cutting Hex Head Bolt (For Ratchet Locking Ass'y) ...	9958.0055	4
25E	3/8"-16 x 7/8" Socket Head Cap Screw	9904.9201	4
25F	5/16"-18 x 1-1/2" Hex Socket Button Head Screw (For "J" Spring) (Not Shown)	9904.9104	1
25G	5/16"-18 x 3/4" Hex Socket Button Head Screw (For "J" Spring) (Not Shown)	9904.9101	1
27A	3/8"-16 Spinlock Nut	9904.6200	12 or 16
27B	5/16"-18 Large Flange Spinlock Nut (For "J" Spring) (Not Shown)	9904.6100	2
28A	1-7/8" O.D. x 1-5/16" I.D. x 1/8" Thick Hub Spacer, per P28A-00360 (Plastic)	9954.0021	3
28B	Oval Spring Spacer, per P28A-00020 (For "B" Spring)	9922.0032	1
28C	Plastic Ratchet Pawl Spacer, per P28A-00300	9922.0022	1
28D	Stainless Steel Ratchet Pawl Washer, per P28A-00820	9922.0061	1
28E	Spring Spacer, per P28A-00070 (For "J" Spring) (Not Shown)	9922.0033	1
29	Woodruff Key #9 for Spring Arbor (3/16" x 3/4") (Not Shown)	9916.0080	1
30A	3/16" x 3/4" Stainless Steel Cotter Pin for N Series Ratchet	9922.0028	1
30B	Ratchet Pawl Spring	9922.0008	1
30C	1/8" x 1" Stainless Steel Cotter Pin for Ratchet Pawl	9922.0024	1
30D	Caution Decal (Spring Under Tension) (Not Shown)	9922.0010	1
30E	Caution Decal (Rewind Caution) (Not Shown)	9922.0014	1
35	1" Welded Iron Pipe Hub Assembly (Specify Model and Riser Fitting)	9901.1600	1
42A	1" 90 Degree FxF Steel 3000 PSI Balanced Pressure Swivel Joint (BUNA)	9929.8538	1
42A	1" 90 Degree FxF Steel 3000 PSI Balanced Pressure Swivel Joint (VITON)	9929.8532	1
42B	1" 90 Degree FxF Steel 4000 PSI Full Flow Swivel Joint (BUNA)	9929.8551	1
42B	1" 90 Degree FxF Steel 4000 PSI Full Flow Swivel Joint (VITON)	9929.8552	1
42C	1" 90 Degree FxF Steel 350 PSI Full Circle Swivel Joint (LPG) (PBN800 Reels)	9929.0501	1
63	"B" Spring w/ Arbor (Item 64D)	9921.0015	1
63	"J" Spring w/ Arbor (Item 64D) (Not Shown)	9921.0030	1
64A	Ratchet Wheel (Includes 25C), per P64A-00120	9922.0015	1
64B	Dust Cap for Inner Spring Side	9922.0036	1
64C	Dust Cap for Outer Spring Side	9922.0037	1
64D	Spring Arbor, per P64A-00110 (For "B" or "J" Springs)	9922.0002	1
64E	Ratchet Pawl Housing (Inner), per P64A-00070	9922.0027	1
64F	Ratchet Pawl Housing (Outer), per P64A-00080	9922.0026	1
64G	Right Hand Ratchet Pawl & Pin (Item 30C)	9922.0302	1
64G	Left Hand Ratchet Pawl & Pin (Item 30C) (For Reverse Springs ONLY)	9922.0301	1
64H	Right Hand Ratchet Locking Assembly Complete	9922.0312	1
64H	Left Hand Ratchet Locking Assembly Complete (For Reverse Springs ONLY)	9922.0311	1
69	N206 Complete Roller Assembly for Model N818	9939.0113	1
69	N204 Complete Roller Assembly for Model N816 (Not Shown)	9939.0111	1
70	N Series Single Roller Arm, per P70A-00250 (Specify Model)	9941.0030	2
91	6" Long Anodized Threaded Spacer Pipe for Model N818	9904.0312	6
91	4" Long Anodized Threaded Spacer Pipe for Model N816 (Not Shown)	9904.0308	6