



Hannay Reels®

The reel leader.

mdi is your Hannay Distributor

call: (727) 835 - 0674 | fax: (813) 571 - 0422

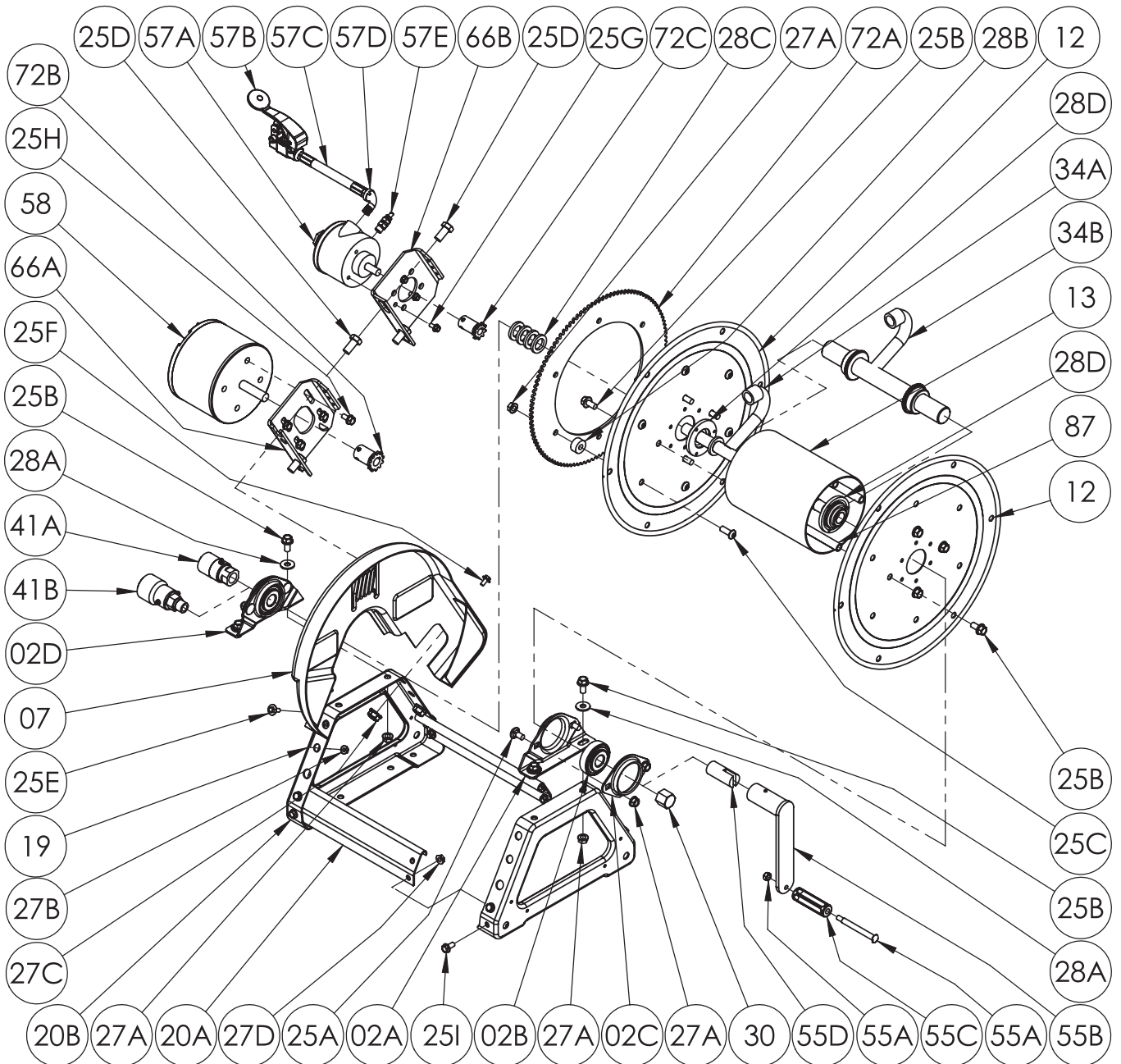
www.HannayReelSales.com | sales@HannayReelSales.com

ISO 90

PARTS LIST

SERIES 1500

Power Rewind



PARTS LIST
ISO 90
SERIES 1500 - POWER REWIND

When ordering parts

BE SURE TO SPECIFY COMPLETE MODEL NUMBER and SERIAL NUMBER OF REEL.

USE PART NUMBER!

Item No.	Description	PART NUMBER	Quantity
02A	Self Aligning Bearing Pillow Block (Steel E-Coated).....	9902.2900	2
02B	1/2" Self Aligning Bearing Insert Plated	9902.1300	2
02C	Self Aligning Bearing Holder (Steel E-Coated)	9902.2800	2
02D	1/2" S.A. Bearing Complete (Inc. 02A, 02B, 02C, 25A and 27A).....	9902.1200	2
02E	1" Self Aligning Bearing Insert Plated (EFH1500 Only) (Not Shown)	9902.1500	2
02F	1" S.A. Bearing (Inc. 02A, 02C, 02E, 25A and 27A) (EFH1500 Only) (Not Shown)	9902.1400	2
06	#35 Chain- 116 Links (43-1/2" Long) w/ Connecting Link (Not Shown).....	9912.0028	1
07	Molded Chain Guard for Motor on Left, per P07A-00190	9957.0030	1
07	Molded Chain Guard for Motor on Right, per P07A-00200 (Not Shown).....	9957.0031	1
12	(17-18) 16-1/2" Dia. Disc for 1500 Series	9903.0516	2
13	6" Dia. Aluminum Drum (Specify Model).....	9905.7112	1
19	Trapezoid Frame Assembly (Specify Model) (Steel E-Coated)	9908.1000	1
20A	1500 Style Foot Stock (Specify Model) (Steel E-Coated)	9907.6000	2
20B	1500/4000 Series Trapezoid Side Frame (Steel E-Coated)	9906.0011	2
25A	3/8"-16 x 3/4" Carriage Bolt (For Bearings).....	9904.0201	4
25B	3/8"-16 x 3/4" Spinlock Bolt	9904.2201	12
25C	3/8"-16 x 1" Socket Head Cap Screw (For Sprocket)	9904.9202	6
25D	1/2"-13 x 1" Hex Head Bolt (For Motorplates).....	9904.1402	2
25E	1/4"-20 x 3/4" Hex Washer Head Black Zinc Screw (For Chainguard)	9904.1071	2
25F	1/4"-20 x 1/2" Hex Washer Head Tap Tight Screw (For Chainguard)	9904.1070	2
25I	5/16"-18 x 5/8" Hex Head Flanged Bolt (For Frame Ass'y).....	9904.1159	8
27A	3/8"-16 Spinlock Nut.....	9904.6200	14
27B	1/4"-20 Small Flange Spinlock Nut (For Chainguard)	9904.6000	2
27C	1/2"-13 Spin Lock Nut (For Motorplate).....	9904.5400	2
27D	5/16"-18 Hex Top Lock Nut (For Frame Ass'y)	9904.5602	8
28A	3/8" Flat Washer.....	9954.0007	4
28B	Sprocket Spacer (1" O.D. x 0.381" I.D. x 1/2" Thick)	9954.0015	6
28C	1/2" Hub Spacer, 3/16" Thick (Plastic)	9954.0020	4
28D	1500 Disc Washer for 1/2" Hub	9965.0040	2
28E	1" Hub Spacer, 1/8" Thick (Plastic) (EFH1500 Only) (Not Shown)	9954.0021	As Req'd
30	1/2" Hub Pipe Cap for 1500 Series	9965.0013	1
34A	1/2" Welded Iron Pipe Hub (Specify Model and Fittings)	9901.0610	1
34A	1/2" Welded 304 SS Hub (Specify Model and Fittings) (EFL1500 Only)	9901.0604	1
34B	1/2" Welded 304 SS Barstock Hub (Specify Model and Fittings) (EFH1500 Only)	9901.0634	1
41A	1/2" 90 Deg FxF Steel 5000 PSI Super Swivel Jt (AFLAS Seals)	9927.8551	1
41A	1/2" 90 Deg FxF 3,000 PSI Oxygen Super Swivel Jt (Viton Seals) (EFL1500)	9927.8537	1
41B	1/2" 90 Deg MxF 6,000 PSI Oxygen Super Swivel Jt (Viton Seals) (EFH1500)	9927.8177	1
72A	112T35 x 13-3/8" Dia. Disc Sprocket (Steel E-Coated)	9910.1321	1
87	Anodized Threaded Spacer Pipe	Spec Model	4
Optional Removable Direct Crank Rewind			
55A	3/8" Shoulder Bolt with Nut.....	9914.0511	1
55B	Removable Hand Crank (Includes 55A & 55C).....	9914.0012	1
55C	Black Plastic Handle.....	9914.0506	1
55D	1/2" Adaptor for Removable Hand Crank on 1500 Series	9914.0053	1
Electric Motor Only Parts			
25H	5/16"-18 x 5/8" Spinlock Bolt (For Electric Motor)	9904.2159	4
58	AN-227 12V DC Face Mount 1/3 HP 650 RPM Motor.....	9915.0042	1
58	AN-239 12V DC Face Mount 1/5 HP 420 RPM Motor (Optional)	9915.0040	1
58	AN-250 12V DC Face Mount 1/12 HP 220 RPM Motor (Optional)	9915.0044	1
66A	Electric Motor Mounting Plate for Trapezoid Frame w/ 25H (Steel E-Coated) .	9923.0006	1
72B	11T35 x 1-3/4" Motor Sprocket for Electric Motor	9910.1119	1
Air Motor Only Parts			
25G	1/4"-20 x 1/2" Spinlock Bolt (For Air Motor)	9904.1058	3
57A	#4 AM Gast Air Motor (4 AM NRV-143) w/ Speed Control Muffler (57E)	9918.1122	1
57B	#3420 Schrader Valve for #4 AM Air Motor	9919.0004	1
57C	1/4" MxM NPT x 18" Long Air Hose	9919.0007	1
57D	1/4" MxF 90 Degree Street Elbow for #4 AM Air Motor	9950.0013	1
57E	1/4" MNPT Speed Control Muffler for #4 AM Air Motor	9919.0006	1
66B	Air Motor Mounting Plate for Trapezoid Frame w/ 25G (Steel E-Coated)	9923.0013	1
72C	9T35 x 1-3/4" Motor Sprocket for Air Motor	9910.1015	1