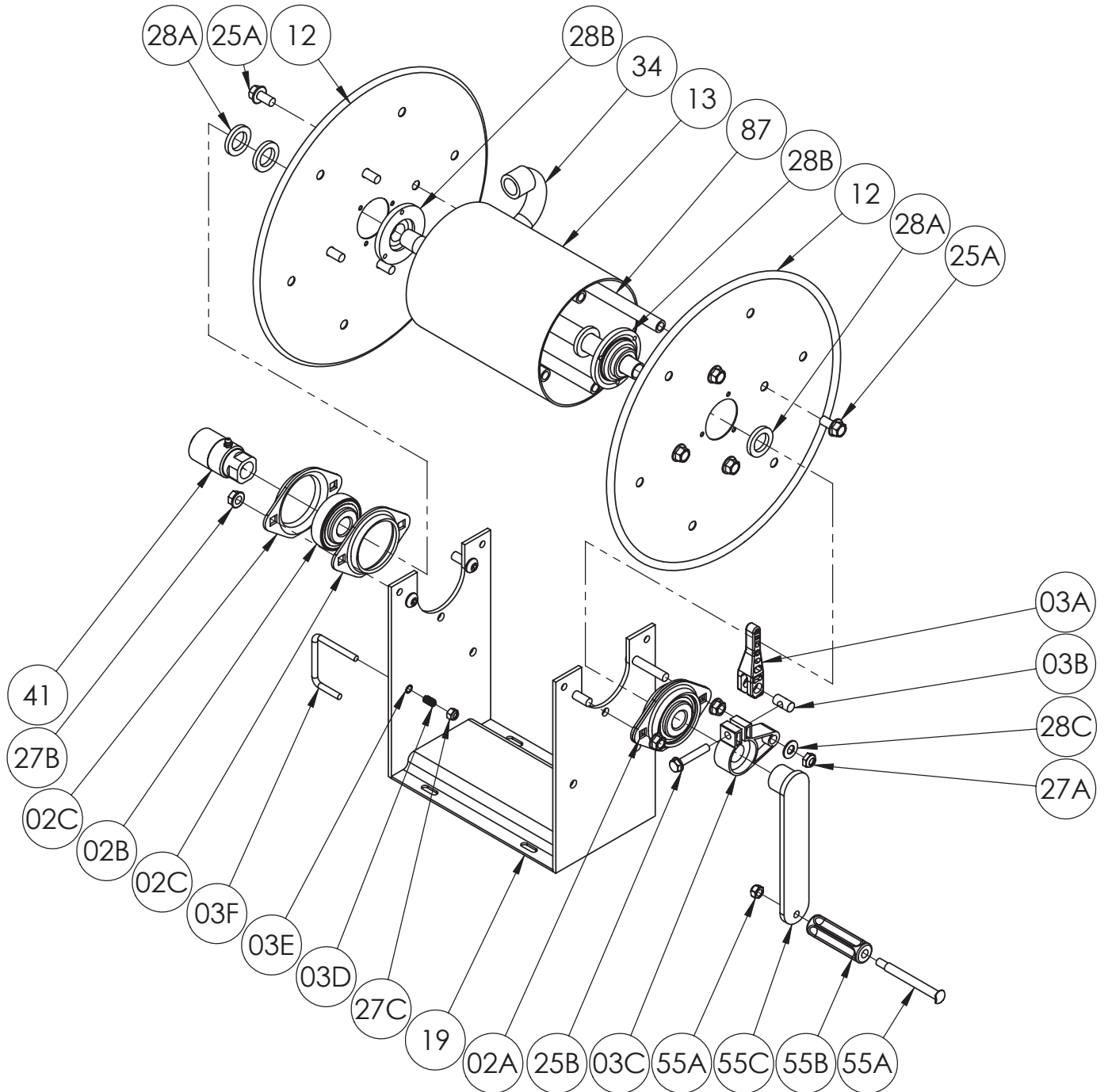




Hannay Reels[®]
The reel leader.

ISO 165
PARTS LIST
SERIES 1000

mdi is your Hannay Distributor
call: (727) 835 - 0674 | fax: (813) 571 - 0422
www.HannayReelSales.com | sales@HannayReelSales.com



PARTS LIST
ISO 165
Series 1000

When ordering parts

BE SURE TO SPECIFY COMPLETE MODEL NUMBER and SERIAL NUMBER OF REEL.

USE PART NUMBER!

<u>Item No.</u>	<u>Description</u>	<u>PART NUMBER</u>	<u>Quantity</u>
02A	1/2" Self Aligning Bearing complete (Includes 02B and 02C)	9902.2610	2
02B	1/2" Self Aligning Bearing Insert (Plated)	9902.1300	2
02C	Self Aligning Bearing Holder (Steel E-Coated)	9902.2800	4
03A	Cam Lock Lever	9947.0132	1
03B	Brass Barrel Nut for Cam Lock Brake	9947.0133	1
03C	Cam Lock Drag Brake Body for 1/2" Hubs.....	9947.0131	1
03D	Spring for PL-3 Pinlock (Optional).....	9965.0138	1
03E	Pinlock Mounting Sleeve (Not Field Installable) (Optional)	9965.0141	1
03F	PL-3 Pinlock, per P03A-00060 (Optional)	9965.0136	1
03G	Cam Lock Kit (Includes 03A, 03B, 03C and 25B)	9947.0130	1
03H	PL-3 Pinlock Kit (Includes 03D, 03F and 27C) (Optional).....	9965.0131	1
12	(14-16) 14.25" Diameter Disc (Steel E-Coated) (Specify Model)	9903.0311	2
13	6" Diameter Aluminum Drum (Specify Model).....	9905.7112	1
19	Steel Frame Assembly (Specify Model)	9908.5000	1
25A	3/8"-16 x 3/4" Spinlock Bolt	9904.2201	8
25B	5/16"-18 x 1-3/4" Hex Head Bolt w/ Nylock Patch.....	9947.0134	1
27A	3/8"-16 Hex Head Nut (ESNA)	9904.5201	1
27B	3/8"-16 Spinlock Nut	9904.6200	4
27C	1/4"-20 Hex Head Nut (ESNA) (Optional)	9904.6001	1
28A	1-3/8" O.D. x 7/8" I.D. x 3/16" Hub Spacer Washer	9954.0020	3
28B	1/2" Hub Disc Washer, per P28A-00050.....	9965.0040	2
28C	3/8" SAE Flat Washer (13/16" O.D.)	9954.0080	1
34	1/2" Welded Steel Hub (Specify Model and Outlet Fitting)	9901.0610	1
41	1/2" 90 Degree FxF Super Swivel (Aflas Packing).....	9927.8551	1
55A	3/8" Shoulder Bolt and Nut for plastic crank handle.....	9914.0511	1
55B	Black Plastic Crank Handle	9914.0506	1
55C	Hand Crank (Includes 55A and 55B)	9914.0021	1
87	Anodized Aluminum Threaded Spacer Pipe	Spec Model	4